

Project :

Date :

Cat. No.:

Type :

Notes :

Volts :

The NTCTRL-1C-12V/24V is a touch panel dimmer used for controlling a variety of LED lamp 12 volts or 24 volts.

**Low voltage Touch panel Single color control
For one gang electrical box installation
(with adapted power supply)**

Output voltage: 12VDC or 24VDC

Output: 1 channel

Static power consumption: <1W

Output current: <8A

Output power: 12V <96W

24V <192W

Working temperature: -20 to 60°C

Certification:

CE RoHS



Available in black or white



Adjust brightness 0-100 quickly



Reduce brightness 255 grades



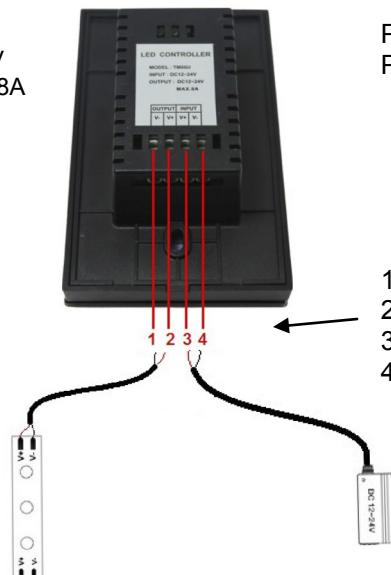
Turn on/off dimmer



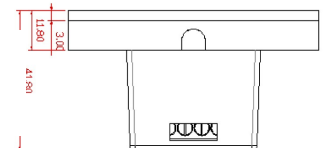
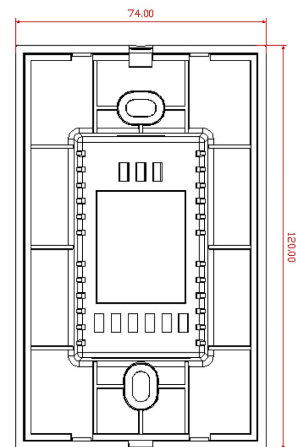
Increase brightness 255 grades

Power output
Output voltage is 12 or 24V
Max total output current is 8A

Power input
Power supply is 12 or 24V



1. for negative
2. for positive
3. for positive
4. for negative



Unit: mm

Natech Industrie

3154 boulevard Industriel, Laval, QC, H7L 4P7 T: (450) 629-1169, F: (450) 629-1168, www.natechlighting.com, info@natechlighting.com

This specification is valid as of 2015-01 and is subject to change without notice. Please confirm with the manufacturer before placing an order.
Copyright 2014 Natech Industrie. All rights reserved.

Project :

Date :

Cat. No.:

Type :

Notes :

Volts :

INSTRUCTIONS

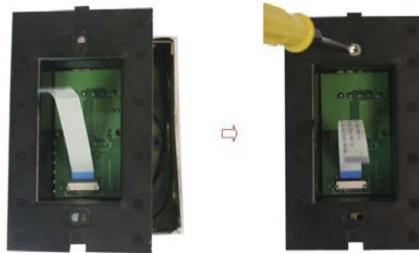
1. Connect wiring according to the application
2. Open the panel
Gently pry gaps in touch panel with a screwdriver and then you can slowly remove the panel



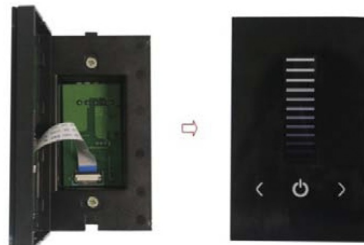
3. Install switch base
Remove the ribbon cable. Press the place which marked by a red circle and pull out to remove the ribbon cable, push in to press it hard.



Put touch panel controller in the cassette on the wall, screw it on the wall, then install the switch base on the wall



4. Cover touch panel
Look at the direction of touch panel, install the ribbon cable and then cover the touch panel



REMARKS:

1. Connect the load wire at first following by the power wire, **Please ensure short circuit can occur between connecting wire before you turn on the power;**
2. The supply voltage of controller ranges in 12VDC or 24VDC it may burn out the controller once exceed the voltage ranges.

Natech Industrie

3154 boulevard Industriel, Laval, QC, H7L 4P7 T: (450) 629-1169, F: (450) 629-1168, www.natechlighting.com, info@natechlighting.com