

Project :

Date :

Cat No. :

Type :

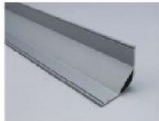
Notes :

Volts :

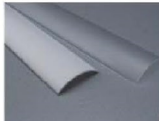
NTALB-16R



End cap with hole  
End cap without hole



Aluminum profile



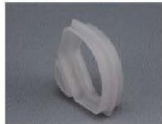
PMMA opal matte cover  
PMMA semi-clear cover  
PC diffused cover



90 degrees joining  
connector



90 degrees connecting



180 degrees joining  
connector

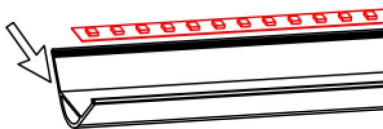


straight connecting



## Steps of Installation

1. Stick the LED strip



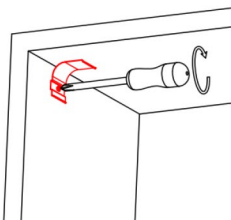
2. Press the diffused cover



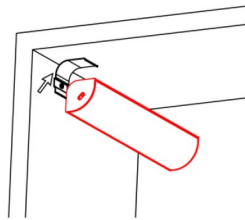
3. Click the end caps



4. Install the mounting clip



5. Click the fixture to the mounting clip



6. Installation completed

