

Project :	Date :
Cat. No :	Type :
Notes :	Volts :

**Description:**

The **NTALB-196** LED bar design provides a unique linear lighting solution combining style, performance and durability in a small width strip, while reducing constructions and operating costs through installation time, energy savings and maintenance free application.

**Housing:**

The **NTALB-196** is a high precision extruded anodized aluminum that can accept a LED linear source from normal to high power. Each assembled Led Bar included two (2) aluminum end caps screwed.

**Lens:**

2 Precision polycarbonate lens available in:  
**PC** polycarbonate

**Mounting:**

Mounts directly on surface  
**FC** Fixed clips (set of 2)

**Application/Installation:**

The **NTALB-196** LED bar can be installed for up and down light diffusion directly on wall with 2 clips.

Consult factory for damp application or splash area using our silicone jacketed IP67 sources. (**WP**)

**Voltage:**

12 VDC  
24 VDC

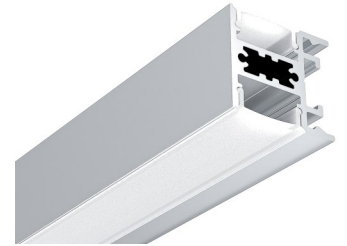
**Electrical and Electronics:**

High quality diodes tested (LM80) and certified life cycle for 60,000 hours (L80). All certified electrical and electronic components have been re-tested over the years for compatibility within products and for specific applications. All products exceed current standards.

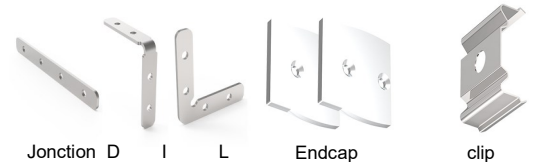
Power supply not included, consult factory. Consult the LED specification sheet for the appropriate optional dimmers and controls combination for your project.

**Homologation:**

Conforms to ANSI/UL standard UL-2108  
Certified to CAN/CSA standard 22.2-9.0



NTALB-196



**Ordering Matrix / Specification**

Model	Bar	Length	Lens	Mounting	LED**	Color	Volts
NTALB	196						
		1000 mm 2000 mm XX mm*	PC polycarbonate	FC Fixed clips	UT30 UT30 WP UT60 UT60 WP	VWW (2400K) WW (2700, 3000, 3500K) NW (4100K) WH (5000K) R (Red)*** B (Blue)*** G (Green)*** A (Amber)***	12VDC 24VDC
					HP30 HP60 HP120 HP240 VHP64	VWW (2400K) WW (3000K) NW (4100K) WH (5000K) R (Red)*** B (Blue)*** G (Green)*** A (Amber)***	
					UT39K CCT (Blanc)	(2700-6500K)****	
					RGB 150 RGB 300 RGBV 192		

\* Consult factory for special lengths.

\*\* Consult the LED linear source and driver data sheets for available wattages and characteristics.

\*\*\* Consult Factory

\*\*\*\* Color Correction

