

Project :	Date :
Cat. No. :	Type :
Notes :	Volts :

Applications:

Ideal for areas where intelligent and RGB LED solutions are required.

- For decor, ambiance and public safety.
- Architectural accentuation with warm and cool white or ambiance creation with RGB versions.
- Motion and twilight detection for patios, pool decks, corridors and bathrooms.
- Battery back-up for emergency path of egress.
- Remote control operation available.

Suitable for indoor and outdoor architectural, hospitality, commercial and residential applications.

Look for other LEDIX IP56 rated products for outdoor applications.

Housing:

Stainless steel housing polished or painted aluminium precision fit parts and assembly. Saddle mount PIR motion sensor available and semi recessed battery backup module.

Source:

0.56W Cool white 5900K 37 lumens
 0.42W Warm white 3100K 24 lumens
 0.28W In single color source
 RED = 630nm
 Green = 520nm
 Blue = 459nm
 0.84W For RGB

Finish:

Available in:

- Polished stainless steel finish
- Silver aluminium powder coated
- Graphite powder coated aluminium
- Old gold powder coated aluminium
- White
- Black

Options:

Choose one of the following:

1. Standard (IP56)
2. Built-in PIR motion sensor (IP20)
3. Built-in battery backup (IP20)

Mounting:

Standard Navi series can be surface mount (1) only and only 11 can be also surface or semi-recessed (2) and 11 with options such as motion sensor, battery backup, are chosen are recessed.

Certification :

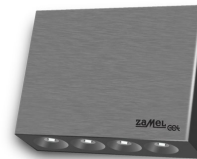
Conforms to ANSI/UL standard UL-2108
 Certified to CAN/CSA standard 22.2-9.0

Power supply requirements:

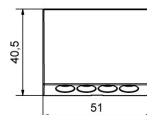
Requires a 12VDC output power supply and can also operate with a 14VDC source for automotive or RV applications.

Leads, connectors and power supply are supplied separately.

* RGB external controller needed sold separately.



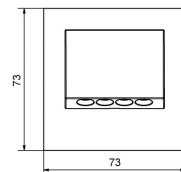
10 Standard



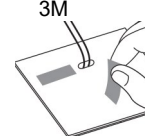
3M only



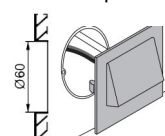
11 Standard



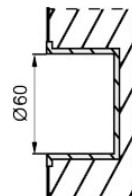
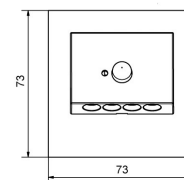
1. surface with 3M



2. with clip



11 PIR motion sensor



Ordering Matrix / Specification

Model	Type	Installation	Voltage	Function(s)	Finish color	Color
NTWL			1 (12volts)			
	10= Navi 11= Navi (with square plate)	1- Surface 2- Semi-recessed		1- Standard 2- Built-in PIR motion sensor 3- Built-in battery backup	1- Aluminium 2- Stainless steel 3- Graphite 4- Old gold 5- White 6- Black	1- White 2- Warm white 3- Red 4- Green 5- Blue 6- RGB

* For led controller ask factory



Natech Industrie

1995 Francis Hughes, Laval, Qc, H7S 2G2: (450) 629-1169, F: (450) 629-1168, www.natechlighting.com, service@natechlighting.com

This specification is valid as of 2022-09 and is subject to change without notice. Please confirm with the manufacturer before placing an order.
 Copyright 2014 Natech Industrie. All rights reserved.

©2015-08