

Project :	Date :
Cat No. :	Type :
Notes :	Volts :

Description:

The **NTALB-71** LED bar design provides a unique linear lighting solution combining style, performance and durability for new construction, while reducing constructions and operating costs through installation time, energy savings and maintenance free application.

Housing:

The **NTALB-71** is a high precision extruded anodized aluminum that can accept a LED linear source from normal to high power.

Lens:

1 polycarbonate lens sliding in the profile

- PC PC diffuser
- OP Opal diffuser
- FR Frost diffuser
- BK Black PC diffuser

Application/Installation:

The **NTALB-71** LED bar is easy to install simply screw the profile into drywall and plaster over then add the diffuser for a beautiful finish.

Voltage:

- 12 VDC
- 24 VDC

Electrical and Electronics:

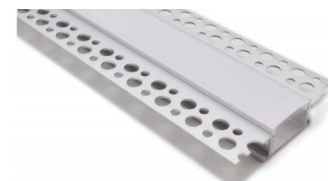
High quality diodes tested (LM80) and certified life cycle for 60,000 hours (L80).

All certified electrical and electronic components have been re-tested over the years for compatibility within products and for specific applications. All products exceed current standards.

Power supply not included, consult factory. Consult the LED specification sheet for the appropriate optional dimmers and controls combination for your project.

Homologation:

Conforms to ANSI/UL standard UL-2108
Certified to CAN/CSA standard 22.2-9.0



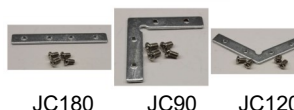
NTALB-71



Black cover



End cap



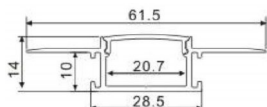
JC180

JC90

JC120

Ordering Matrix/Specification

Model	Bar	Length	Lens	LED**	Color	Volts
NTALB	71	1000mm 2000mm XX mm <small>Consult factory for special length</small>	PC Polycarbonate OP Opal FR Frost BK Black	UT30 (4.6W/M 450LM) UT30 WP UT60 (10W/M 896LM) UT60 WP UT120 (20W/M 1790LM) UT120 WP UT120 RGB+WH (19.2W/M)	VWW (2400K) WW (2700, 3000, 3500K) NW (4100K) WH (5000K) R (red) B (blue) V (green) A (amber)	12VDC 24VDC
				HP30 (14.5W/M 1279LM) HP30WP HP120 (19.2W/M 1600LM) HP120WP HP60 (10W/M 1070LM) HP240 (15W/M 1500LM) VHP64 (22W/M 3437LM)	VWW (2400K) WW (3000K) NW (4100K) WH (5000K) R (red) B (blue) V (green) A (amber)	
				UT39K CCT (White)	(2700-6500K)	
				RGB 150 RGB 150WP		
				RGB 300 RGB 300WP		
				RGB 600 RGB 600WP		



NTALB-71

** Consult the LED linear source and driver data

Natech Industrie

1995 Francis Hughes, Laval H7S 2G2 T: (450) 629-1169, F: (450) 629-1168, www.natechlighting.com, service@natechlighting.com

This specification is valid as of 2022-09 and is subject to change without notice. Please confirm with the manufacturer before placing an order. Copyright 2014 Natech Industrie. All rights reserved.

Project :

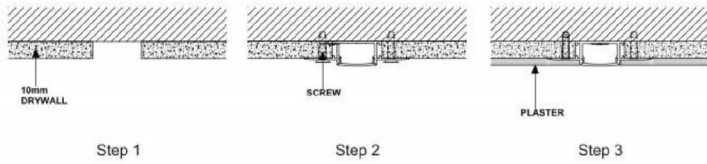
Date :

No Cat. :

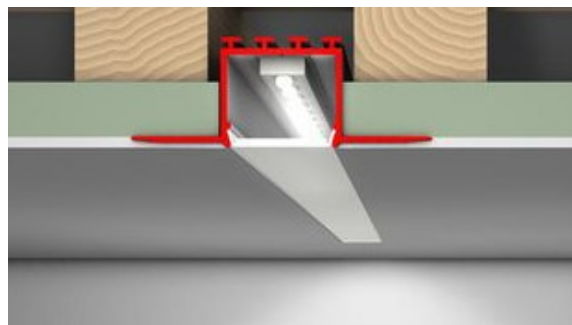
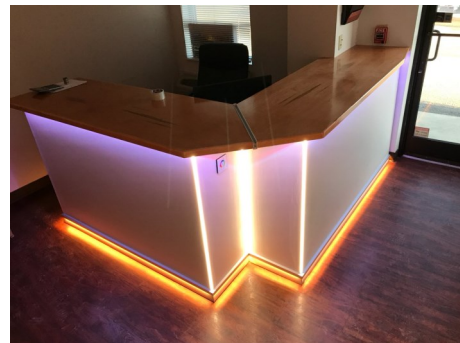
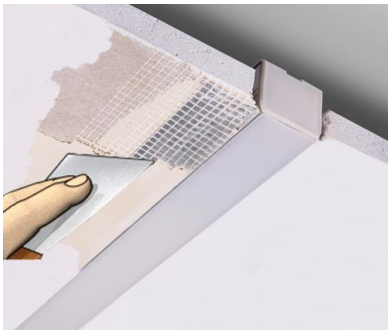
Type :

Notes :

Volts :



NTALB-71



Natech Industrie

1995 Francis Hughes, Laval H7S 2G2 T: (450) 629-1169, F: (450) 629-1168, www.natechlighting.com, service@natechlighting.com

This specification is valid as of 2022-09 and is subject to change without notice. Please confirm with the manufacturer before placing an order.
Copyright 2014 Natech Industrie. All rights reserved.