

Project :	Date :
Cat No. :	Type :
Notes :	Volts :

Description:

The **NTALB-02SP** LED bar design provides a unique linear lighting solution combining style, performance and durability while reducing construction and operating costs through installation time, energy savings and a maintenance free application. Ideal for surface installations.

Housing:

The **NTALB-02SP** is a high precision extruded anodized aluminum bar that can accept a low-power LED source to medium power.

Lens:

Precision fit extruded acrylic for indoor use only available in:

FR Frosted
OP Opalin

Mounting:

Mounts within on a surface with:

FC Fixed clips (set of 2)

Application/Installation:

The **NTALB-02SP** LED bar can be installed, for up, or down applications. This bar can be installed on surfaces, under cabinets.

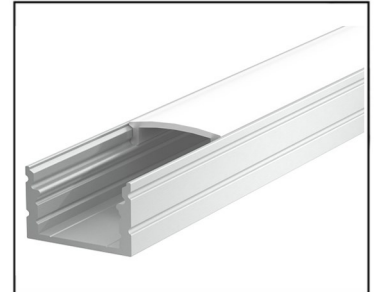
Electrical and Electronics:

High quality diodes tested (LM80) and certified life cycle for 60,000 hours (L80). All certified electrical and electronic components have been re-tested over the years for compatibility within products and for specific applications. All products exceed current standards.

Power supply not included, consult factory. Consult the LED specification sheet for the appropriate optional dimmers and controls combination for your project.

Homologation:

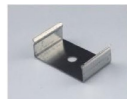
Conforms to ANSI/UL standard UL-2108
Certified to CAN/CSA standard 22.2-9.0



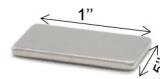
NTALB-02SP - FR



NTALB-02SP - Endcaps



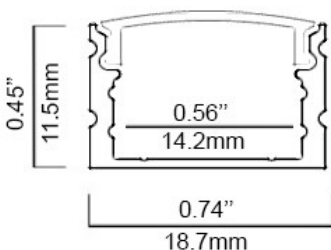
FC



MG

Ordering Matrix/Specification

Model	Bar	Lenght	Lens	Mount	LED**	Color	Volts
NTALB	02SP	1000mm 2000mm XX mm Consult factory for special lenght	FR Frosted OP Opalin	FC Fixed clip	UT30 (4.6W/M 450LM) UT30 WP UT60 (10W/M 896LM) UT60 WP UT120 (20W/M 1790LM) UT120 WP UT120 RGB+WH (19.2W/M)	VWW (2400K) WW (2700, 3000, 3500K) NW (4100K) WH (5000K) R (Red)*** B (Blue)*** G (Green)*** A (Amber)***	12VDC 24VDC
					HP30 (14.5W/M 1279LM) HP30WP	WW (3000K) NW (4100K) WH (6000K)	
					HP7.2 (7.2W/M 1008LM) HP10 (10W/M 1450LM) HP120 (19.2W/M 1600LM) HP120WP HP60 (10W/M 1070LM) VHP64 (22W/M 3437LM)	WW (3000K) NW (4100K) WH (5000K)	24VDC
					UT39K (20W/M 790-830LM) CCT (Blanc)	(2700-6500K)	
					RGB 150 (7.2W/M) RGB 150 WP		
					RGB 300 (14.4W/M) RGB 300 WP		
					RGBW192 (15.3W/M 343LM) RGBW192 WP		



** Consult the LED linear source and driver data

Natech Industrie

1995 Francis Hughes, Laval H7S 2G2 T: (450) 629-1169, F: (450) 629-1168, www.natechlighting.com, service@natechlighting.com

This specification is valid as of 2022-09 and is subject to change without notice. Please confirm with the manufacturer before placing an order.
Copyright 2014 Natech Industrie. All rights reserved.