

Project :	Date :
Cat. No. :	Type :
Notes :	Volts :

### Applications:

Ideal for areas where intelligent and RGB LED solutions are required.

- For decor, ambiance and public safety.
- Architectural accentuation with warm, natural white and cool white or ambiance creation with RGB versions.
- Motion and twilight detection for patios, pool decks, corridors and bathrooms.
- Remote control operation available.

Suitable for indoor and outdoor architectural, hospitality, commercial and residential applications.

Look for other LEDIX IP56 rated products for outdoor applications.

### Housing:

Stainless steel housing polished or painted aluminium precision fit parts and assembly. Saddle mount PIR motion sensor available

### Source:

0.56W	Cool white	5900K	66lumens
0.42W	Warm white	3100K	57 lumens
0.58W	Natural white	4200K	48 lumens
0.84W	For RGB		

### Finish:

Available in:

- Polished stainless steel finish
- Silver aluminium powder coated
- Graphite powder coated aluminium
- Old gold powder coated aluminium
- White
- Black

### Options:

Choose one of the following:

1. Standard (IP56)
6. Built-in PIR motion sensor (IP20)

### Mounting:

Standard Navi series can be surface mount (1) only and only 11 can be also surface or semi-recessed (2) and 11 with options such as motion sensor are recessed.

### Certification :

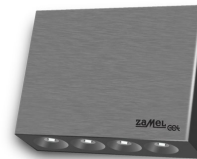
Conforms to ANSI/UL standard UL-2108  
Certified to CAN/CSA standard 22.2-9.0

### Power supply requirements:

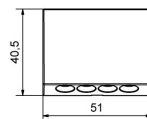
Requires a 12VDC output power supply and can also operate with a 14VDC source for automotive or RV applications.

Leads, connectors and power supply are supplied separately.

\* RGB external controller needed sold separately.



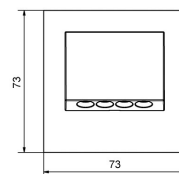
10 Standard



3M only



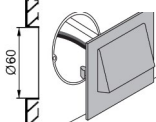
11 Standard



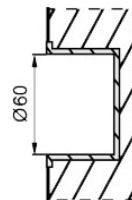
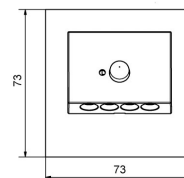
1. surface with 3M



2. with clip



11 PIR motion sensor



### Ordering Matrix / Specification

Model	Type	Installation	Voltage	Function(s)	Finish color	Color
NTWL			1 (12volts)			
	10= Navi	1- Surface		1- Standard	1- Aluminium	1- Warm
	11= Navi (with square plate)	2- Semi-recessed		6- Built-in PIR motion sensor	2- Stainless	2- Warm white
					3- Graphite	7- Natural white
					4- Old gold	6- RGB
					5- White	
					6- Black	

### Natech Industrie

1995 Francis Hughes, Laval, Qc, H7S 2G2: (450) 629-1169, F: (450) 629-1168, [www.natechlighting.com](http://www.natechlighting.com), [service@natechlighting.com](mailto:service@natechlighting.com)

This specification is valid as of 2022-09 and is subject to change without notice. Please confirm with the manufacturer before placing an order.  
Copyright 2014 Natech Industrie. All rights reserved.

©2015-08